



REVIEW

WOOD RIVER, ILLINOIS

Vol. 31 - No. 10 May 17, 1968



Bartosiak Family in Limelight

Ed Bartosiak, Cracking Department, and his daughter Sharon and son Ed, Jr., are keeping the Bartosiak name in the public view in Granite City.

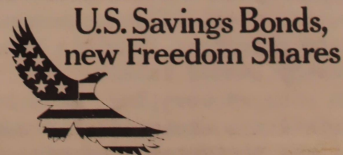


SHARON, A SENIOR at Granite City High School, was crowned May Queen in ceremonies May 9 as part of a program, "Attic Antics", sponsored by the Girls Athletic Association. During her high school career, Sharon has been a cheerleader and an usherette, and a member of the Student Council and Pep Club. Last fall she was a member of the Homecoming coronation court. After completion of high school, Sharon plans to seek employment as a secretary.



ED, JR., WHO IS COMPLETING his junior year at Granite City High, has been elected President of the Student Council for next year, having been Vice President last year. Ed has also been elected to the National Honor Society.

Needless to say, Ed is proud of the accomplishments of these two; but they are simply following in their father's footsteps. Ed has been an Alderman in Granite City for seven years and he says it looks as if his son is going to make an even better politician!



1968-69 SRA Queen, Mary Kay



The annual SRA Queen Dance, held Friday evening May 3, was attended by over four hundred SRA members and guests.

The highlight of the evening came at 10 p.m. when the 1967 SRA Queen, Gerry Powell and the five 1968 candidates were escorted to the dance floor by members of the SRA Board. The 1968 candidates were Bettie Augustine, Linda Kolling, Sue McGinnis, Margaret Stroud, and Mary Kay Monahan, who was selected queen by ballots cast by SRA members attending.

A note of humor was injected into the ceremony by the appearance of a "write-in" candidate escorted by C. E. Reichert, Treasury. The surprise candidate turned out to be Jerome Juda, Eng. Field, better known for his impersonation of Santa Claus at the annual Christmas Party.

The queen and her court were presented bracelets as mementos of the evening. Virginia Jones, Treasury, whose talents for design and decorating made this year's dance exceptionally colorful, was presented a corsage.



R. D. BRIDWELL, (Eng. Field) Chairman of the dance, presented Mary Kay with a bouquet of roses and an engraved bracelet.



QUEEN MARY KAY, was escorted from the throne onto the dance floor, by SRA President, K. R. Zumwalt, Utilities.



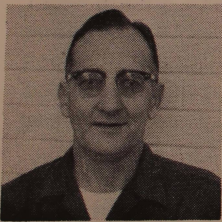
SURPRISE WRITE-IN CANDIDATE!

Riverton Chem. Class Visits Refinery



THE SENIOR CHEMISTRY CLASS OF Riverton, Illinois, High School made their fourth annual visit to the Refinery last month. The group is shown above with their Instructor (left) Mr. Harry W. Eumont. Next to Mr. Eumont is C. R. Woodford, Manager Dispatching. The visit gave Eumont and Woodford an opportunity to talk over old times as they were classmates at the University of Maryland.

Promoted to Operations Foreman



O. D. PHELPS, Gas-Thermal, has recently been promoted to Operations Foreman in that department. Omar began his career

with Shell in the Compounding Department in 1939. He worked in various departments and has been in Gas-Thermal Cracking for the past twelve years. He and wife Virginia are parents of two sons and a daughter, all of whom are married. Omar lives in Roxana, enjoys golf as a sport, and is a Village of Roxana Trustee.

Shell-Branded Tires - Fall, 1968

P. C. Thomas, Vice President Marketing, has announced that the Company will introduce Shell-branded tires in the fall of 1968. The Company currently is marketing a full line of Shell-branded batteries and filters introduced last year.

The tires will have an exclusive tread design and will incorporate the newest techniques in tire-building. In addition, the tires will have tread-wear indicators that become visible when the tire is down to 1/16-inch of tread.

Five grades of Shell-branded tires will be available to the replacement market: a high-performance wide oval, a premium or prestige, a first line, a "promotional", and a snow tire. The tires will be manufactured by Firestone, Kelly-Springfield (a subsidiary of Good-year) and Uni-Royal.

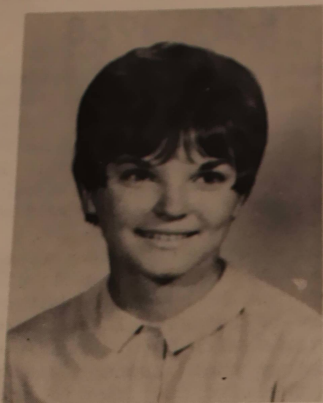
Introduction of the Shell line of tires is expected to improve the TBA (tires, batteries, and accessories) marketing program for both Shell and its dealer and jobber organization. Customer and dealer acceptance of the Shell-branded batteries and filters has been gratifying.

Automotive Equipment



O. C. JOHNSON, Craneman, stands beside one of two new John Deere backhoes received.

Attends Convention



KAREN TESTER, daughter of William Tester, Catalytic Cracking, was one of five students from Roxana High School who recently attended the Illinois Association of Student Councils Convention at the Sherman House in Chicago.

Karen, who is a sophomore, is Treasurer of the Kaskaskia District of Student Councils. In addition to her studies, she is a member of the Student Council, Thespians, and Pep Club. Karen collects cups and saucers, likes to sew, and takes piano lessons. She has a younger brother, Barry, and sister, Brenda. Karen says she would like to be an English teacher.

May 3, 1917 - The first Liberty Loan bonds are offered to the American people. (World War I)

May 18, 1875 - The First Kentucky Derby is run at Churchill Downs, Louisville, Kentucky. The Derby, carrying a purse of \$2,850 was won by Aristides.

May 23, 1785 - Bifocal eyeglasses invented by Benjamin Franklin to save him from the chore of carrying around two separate pairs of spectacles.

Hogge to Vice President

A. C. Hogge, General Manager Personnel and Industrial Relations, is being nominated as Vice President to succeed John C. Quilty who will retire September 1968.

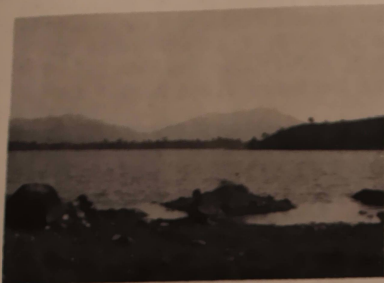
Clif Hogge is well known to Wood River Refinery employees, having held four assignments here. In 1944 and 1945 he was Chemist in charge of the Experimental Laboratory and in 1953 he returned to Wood River as Chief Technologist--in 1955 was named Assistant Superintendent. He left in 1956 to join Shell-Canada and after serving various management positions there, returned to Wood River in 1963 as Refinery Manager. He was appointed General Manager Technical Departments in Head Office Manufacturing Organization in 1964.

Unconventional Raw Materials Group Formed

The news of the formation of the Special Projects Group-Unconventional Raw Materials has been received from President, R. C. McCurdy. This group will carry forward Shell's studies and activities related to potential commercial production of liquid fuels from shale oil, tar sands, and coal.

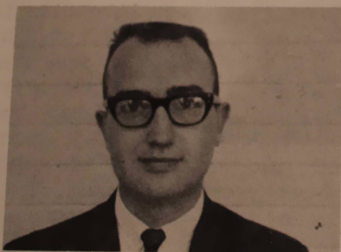
W. G. EDDLEMAN, who has been on special assignment coordinating Shell's interests in this field, has been appointed Manager, Special Projects Group-Unconventional Raw Materials. Bill began his Shell career at Wood River Refinery in 1946 and in 1957 was transferred to Houston. Since then, he has held various positions. Eddleman will report to Mr. McCurdy.

Another letter has been received at P & IR from Bill Generally who is stationed with the U.S. Army in Vietnam. Bill says the monsoon (rainy) season will start soon and his unit will be moving further north. He has been promoted from PFC to SP/4 (Specialist Fourth Class).



THIS PICTURE WAS RECEIVED WITH Bill's letter. This once sight-seeing spot is Lake Biền hồ in Pleiku, Vietnam. Bill says the fighting has destroyed much of the scenic beauty over there and that his unit sometimes gets sniper fire from the mountains shown in the left background.

To Central Region



ROGER SPARKS, Treasury, has accepted an appointment as Senior Credit Man in the Central Marketing Region, Chicago, effective June 1. "Sparkey" joined Shell in September 1964 in Stock Accounting. He has a M.S. degree from S.I.U., Carbondale, in Marketing.

"Car Care Month"



What better time to remember that winter driving has been extra hard on your car? And if you don't want your car to prove it by coughing to a stop somewhere on the midnight side of Gobbler's Knob, you'd better make a note to drop off the family chariot at your favorite Shell station for Spring servicing.

Proper car care is the service station operator's speciality. In addition to the regular oil change and lubrication, your local Shell service station also offers a complete range of tires, batteries and accessories, and the skill to give your car a thorough safety check and that all-essential Spring tune-up.

S R A

Refinery Softball League

Team rosters must be submitted by Monday, May 20 to Wick Lambert, Engineering Services, Field Office No. 2, plant phone 833. League play will begin Monday, June 3--starting times to be 6:15 p.m. and 8:15 p.m. Team captains will receive rules and schedules. Get on the "ball" and get your teams turned in.



Service Anniversaries



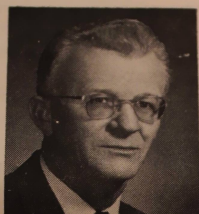
N. J. MERCER
Eng. Field
30 Years



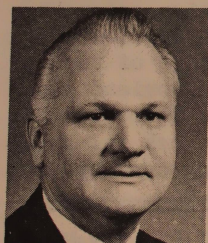
H. E. SCHAEFER
Purchasing
30 Years



W. E. BURGDORF
Eng. Field
25 Years



G. J. NOVAK
Aromatics
25 Years



H. E. RETZER
Dispatching
25 Years



N. L. RICHEY
Refinery Lab
25 Years

Equities Fund Unit Values

Equities Fund unit values on April 5 and 19, respectively, were \$1.949 and \$1.999.

The average cost per share of Shell stock purchased during April was \$62.366.

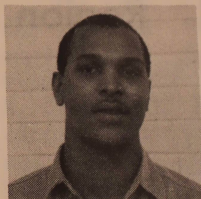
Farewell For Long-Time Employee

Fifty fellow employees, retirees, and friends of Harold D. Smithson gave him a fine farewell upon the occasion of his retirement. The party was held at the Moose Lodge in Wood River. "Smitty", who is a well known hunter and fisherman was presented with a fishing outfit and a cash gift. He had worked for the Refinery since August 1926.



SHOWN ABOVE, left to right, are E. J. Nelson, Manager Lube Department, C. W. Ryan (retired) former Lube Manager, Smithson, and his son, Harold, Jr.

Shell Welcomes :



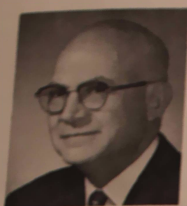
R. W. ARMSTEAD, a new employee in Lube Oils is from Alton. Robert graduated from Alton Sr. High and has recently completed two years in the U.S. Army--one year in Vietnam. He is single and likes to play football.



G. D. BORGENS is a new employee in Eng. Field. Gary is from Colo., and has spent four years in the U.S. Navy as an Electronics Technician. He and wife Melba are interested in cars.



Retirements



L. F. BOULLION
Research Lab



F. L. DURBIN
Eng. Field



Retirements



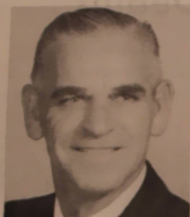
I. W. MILLER
Lube Oils



R. A. MUELLER
Eng. Field



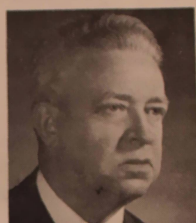
L. GIACOMELLI
Eng. Field



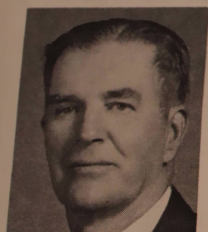
L. GIDDINGS
Eng. Field



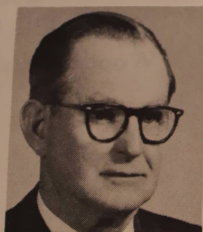
C. A. REYNOLDS
Purchasing



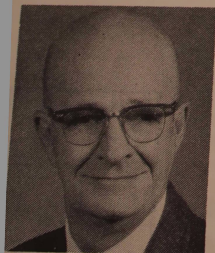
H. O. SMITHSON
Lube-Asphalt



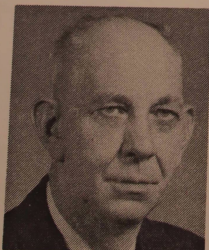
R. J. GILWORTH,
Gas-Thermal



C. E. HARNESS
Refinery Lab



J. T. HAWKINS
Distilling



W. B. KING
Lube D&D

Social Security Contribution Rate

The social security contribution rate is the same for 1968 as it was for 1967. If your pay is unchanged, the amount deducted each payday for social security will be the same this year as it was last. But if you earn more than \$6,600 in 1968, you will pay the deductions for a longer time than you did last year so your total contribution will be higher. This is because the first \$7,800 of your earnings for 1968 count toward social security, instead of the first \$6,600 as in 1967.

If you had earnings of \$6,600 or less in 1967 and have the same amount in 1968, your total social security contribution will be the same for both years.

CLASSIFIED ADS

FOR SALE

Stamp collection (3 generations old) U. S. and foreign stamps. Phone Wm. Bright (Edwardsville) 656-7180.

14 ft. Richline aluminum boat, 35 hp Johnson motor, and Portage trailer. Phone C. D. Bunting, 259-8279.

1965 Honda, 160 CB. Good condition - \$300. Phone, R. M. Waymire, 254-5980.

Used storm windows and screens. 56" x 30". Phone L. B. Booth, 465-5286.

Two year old female Pointer with pen and dog house. Phone H. Von Hoven (Edwardsville) 656-6499.

1963 Ford 4-door Galaxy, Custom V-8, 283 automatic. Real clean! Also, 1961 Ford Fairlane 500 4-door, 6 cyl. Fresh overhaul. Phone Don Robinson, 259-6455.

FOR RENT

Four room home. Phone M. Levi (Edwardsville) 656-2737.



Shell's
Belles

PHYLLIS MAYES has been promoted to Head Duplicator - Treasury Department. She has worked for Shell since June 1965 and has attended night classes at E. St. Louis campus of S.I.U.

MARILYN LOGAN, Engineering Services, resigned May 15. She and husband Douglas will become parents in late August.

Births . . .

Mr. and Mrs. Harry Hill are parents of a son, STEVEN RICHARD, born May 3. Harry is employed in Alkylation.

Mr. and Mrs. Dale R. Henderson, Gas Department, are parents of a daughter, DAWN MARIE, born April 30.

Mr. and Mrs. V. L. Icade are parents of a daughter, AMY JO, born May 6. Virgil is employed in Dispatching.

Deaths . . .

LAMKIN H. BROWN, a former Engineering Field employee, died April 14. He retired 8-1-61.

HOMER T. MORRIS, retired from Engineering Field since 1-1-52, died April 26.

CHARLES A. MAGUIRE died April 28. He retired 3-1-48 from Engineering Field.

SHELL OIL COMPANY
Wood River, Illinois 62095

Bulk Rate
U. S. POSTAGE
3.6¢ PAID
Wood River, Ill.
Permit No. 229