

TOWNSHIP 6 NORTH, RANGE 10 WEST.

Note: Figures in red ink indicate surveys of land from the Surveyors records of the Madison District, Mo.



Line between Madison and Jersey Counties

South West Corner of Madison

Line between Jersey and Mississippi Counties

MONTI CELLO DEPOT

MISSISSIPPI RIVER

CLIFTON

CHICAGO ALTON & ST. LOUIS RAIL ROAD

TOWNSHIP 5 NORTH, RANGE 10 WEST.



*For authority for this Book of Road Plats
See County Court records Vol. 4, page 399 and Vol. 5, page 34
Private Laws of Illinois 1869, Vol. 2, page 325.*

TOWNSHIPS 3, 4, AND 5 NORTH, RANGE 10 WEST 3RD. P.M.



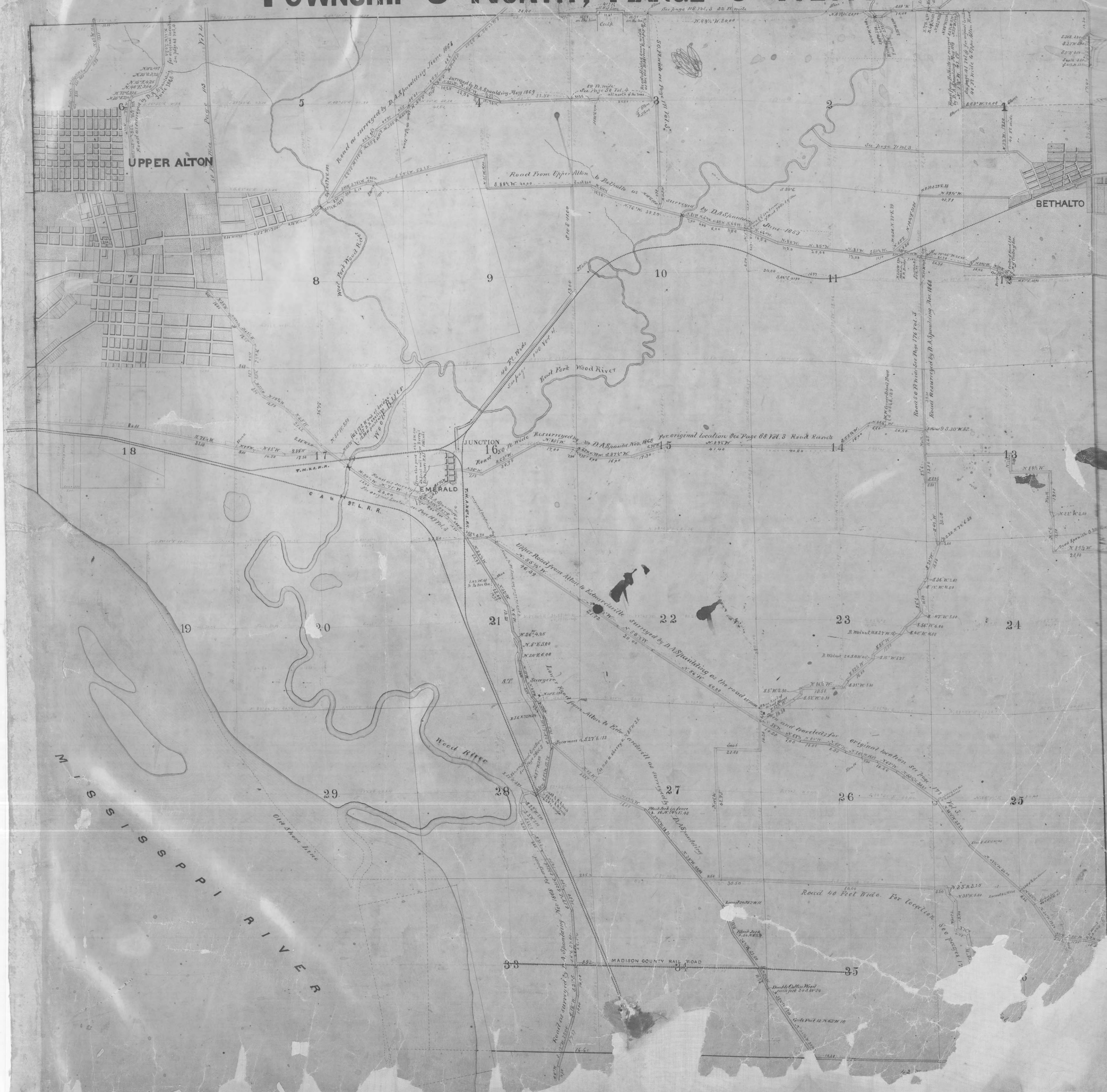
TOWNSHIPS 3 AND 4 NORTH, RANGE 10 WEST.



TOWNSHIP 6 NORTH, RANGE 9 WEST.



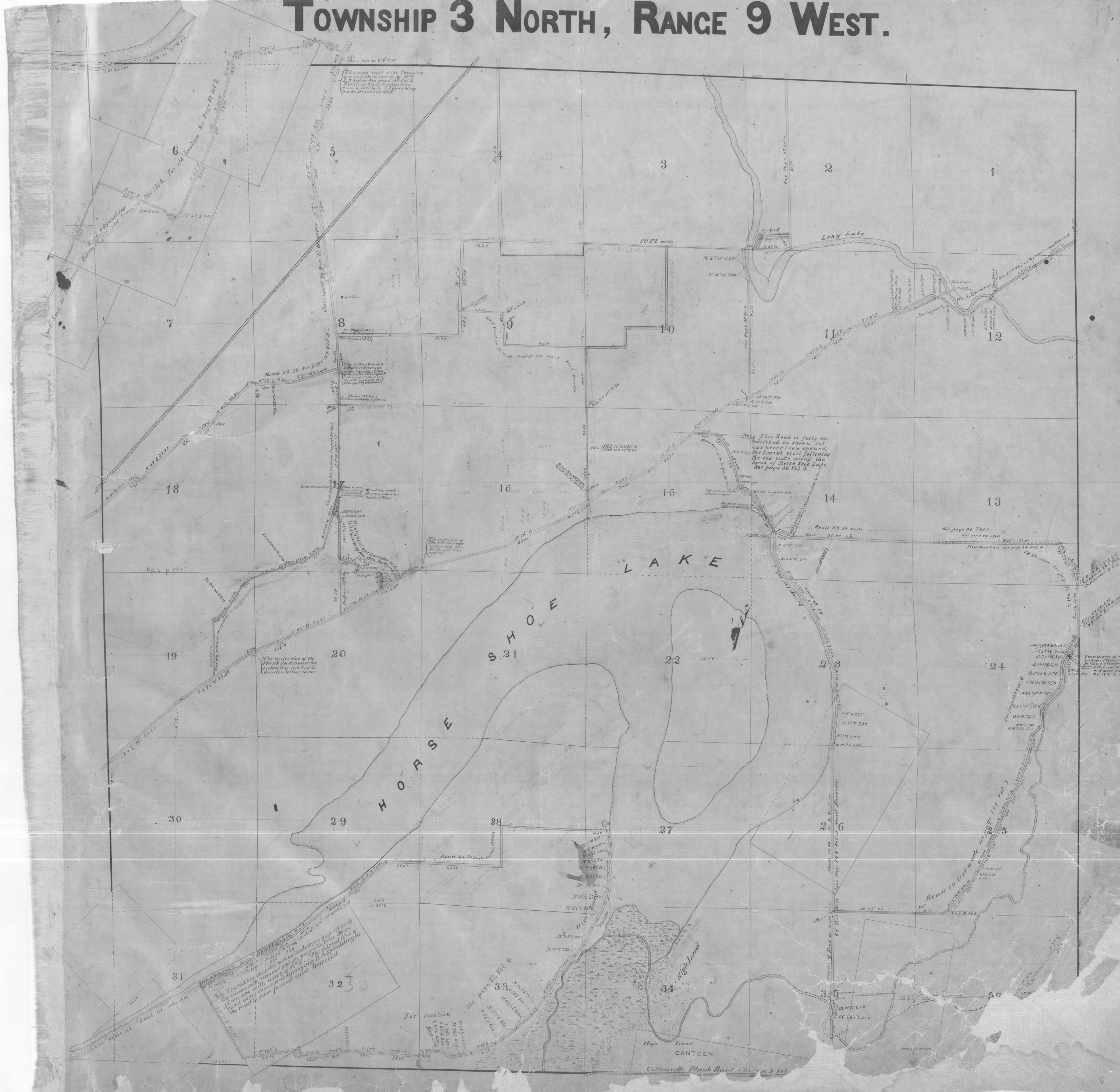
TOWNSHIP 5 NORTH, RANGE 9 WEST.



TOWNSHIP 4 NORTH, RANGE 9 WEST.



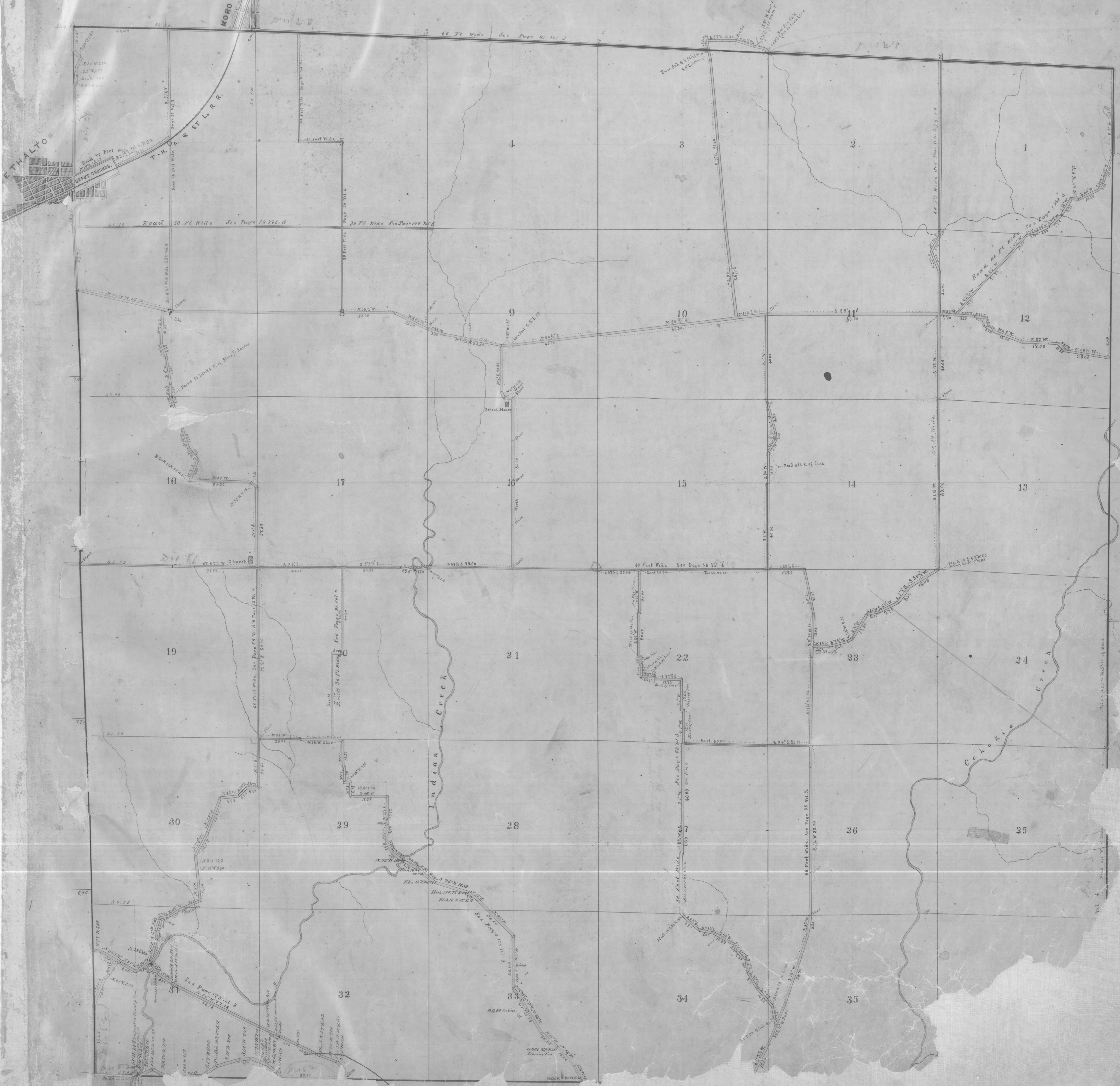
TOWNSHIP 3 NORTH, RANGE 9 WEST.



TOWNSHIP 6 NORTH, RANGE 8 WEST.



TOWNSHIP 5 NORTH, RANGE 8 WEST.



TOWNSHIP 4 NORTH, RANGE 8 WEST.



TOWNSHIP 3 NORTH RANGE 8 WEST



COLLINSVILLE

ST. LOUIS, VANDALIA AND TERRE HAUTE RAIL ROAD

Road from Hadley's Bridge
to Collinsville
685' 50" long north of section 19

See added book
for location
of Honey Locust

Survey No 608
page 743 Vol 2

Claims 161774

Survey 509
Claim 16534

Survey 603
Claim 599600

Survey No. 399
Claim 602

66 Feet Wide

Survey 510 Claim 538
Survey 511 Claim 604
Survey 512 Claim 1258
Survey 513 Claim 330301
Survey No 608 page 743 Vol 2
Claims 161774
Survey 509 Claim 16534
Survey 603 Claim 599600
Survey No. 399 Claim 602
Road from Hadley's Bridge to Collinsville 685' 50" long north of section 19
See added book for location of Honey Locust
66 Feet Wide
St. Louis, Vandalia and Terre Haute Rail Road
Collinsville

TOWNSHIP 6 NORTH, RANGE 7 WEST.



PRAIRIE CITY.

NEW HAMPTON

see Page 94 and 95 Vol. 3

Road surveyed by D. A. Spaulding & Co. in
May 1889. For original
location see pages 94, 95 Vol. 3
of R. 7 W.

60 ft. wide see page 93 Vol. 3

Cart Road 35 Feet wide See Page 62 Vol. 3
40 ft wide see page 99 Vol. 3

25 Acres

44 Foot wide Vol. 4 Page 153

Black Oak 70 S. 24 W. 30

50 ft wide see page 3 Vol. 3
N. 70° 30' E 100.00
S. 88° 15' W 100.00

888° 00' 00"

N. 70° 30' E 100.00

N. 70° 30' E 100.00

N. 70° 30' E 100.00

N. 70° 30' E 100.00

N. 70° 30' E 100.00

N. 70° 30' E 100.00

N. 70° 30' E 100.00

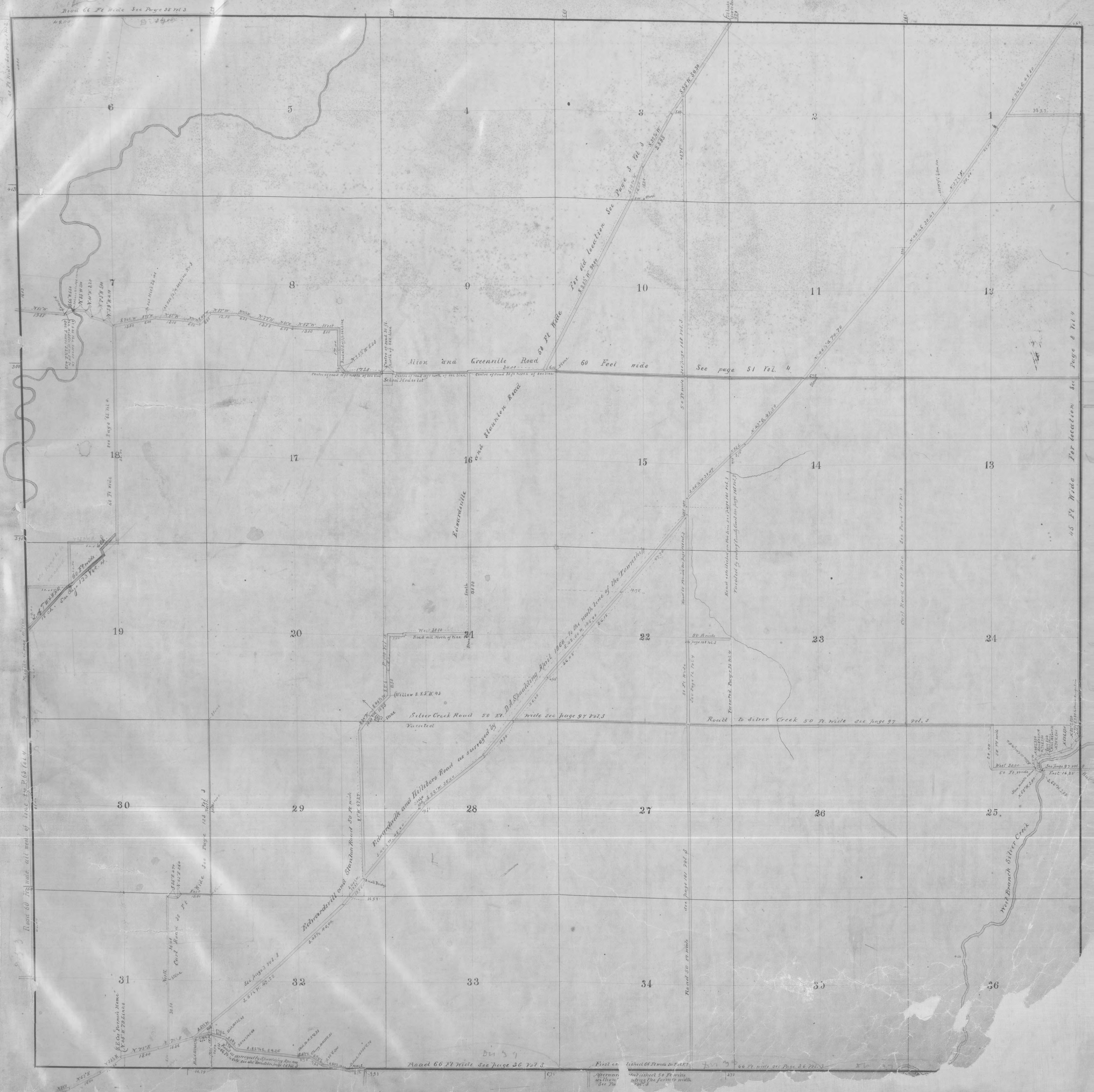
N. 70° 30' E 100.00

N. 70° 30' E 100.00

N. 70° 30' E 100.00

Standard Line

TOWNSHIP 5 NORTH RANGE 7 WEST



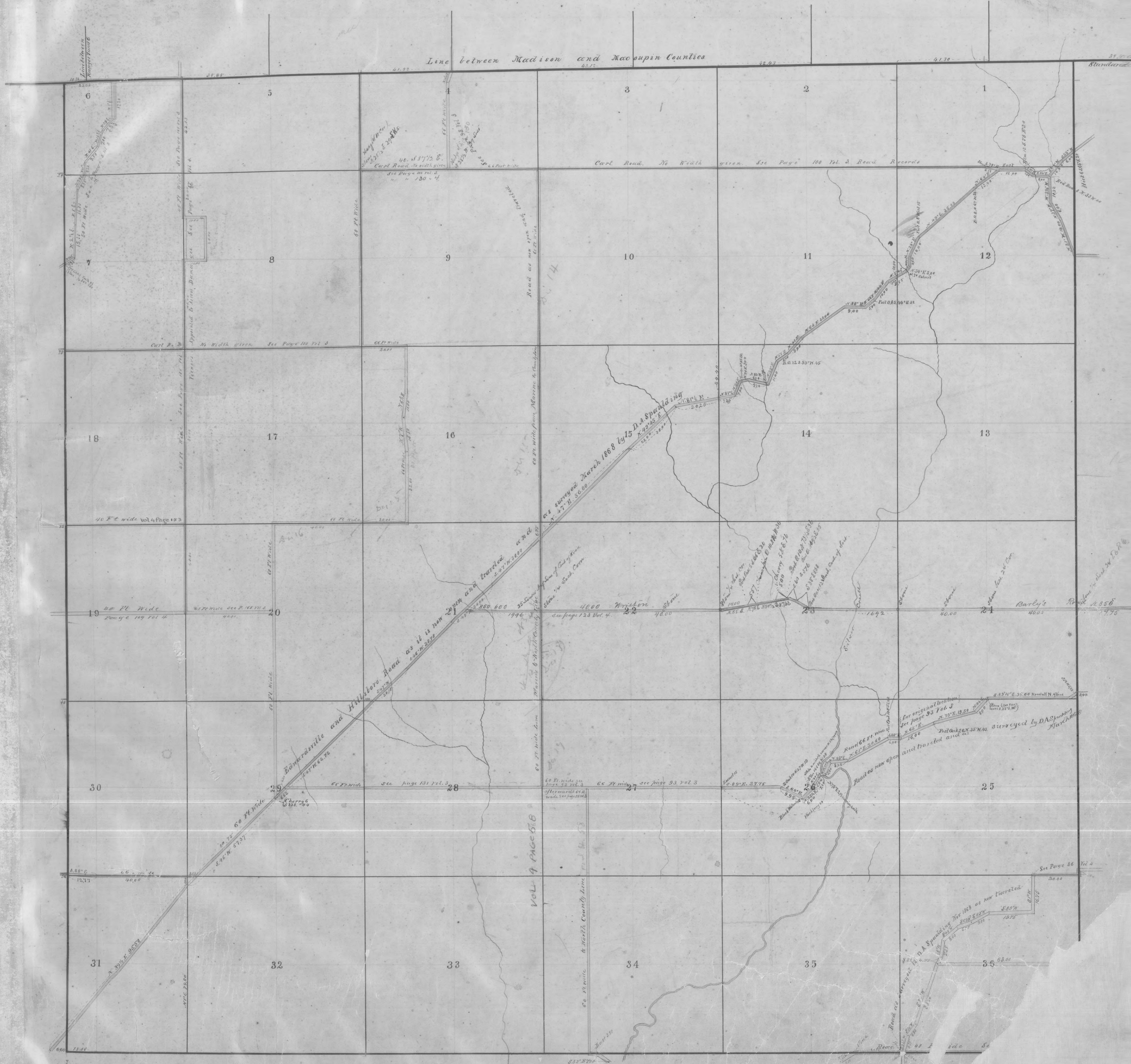
TOWNSHIP 4 NORTH RANGE 7 WEST



TOWNSHIP 3 NORTH, RANGE 7 WEST.



TOWNSHIP 6 NORTH, RANGE 6 WEST.



Line between Madison and Macoupin Counties

Neighbors
See page 100 Vol 3
Carl Road No width given See page 100 Vol 3 Road Records

Carl R. No width given See page 100 Vol 3

18

17

16

14

13

19

20

23

21

30

29

28

25

31

32

33

34

35

36

VOL 4 PAGE 618

See Page 86 Vol 3

Barley's Road
See page 95 Vol 3
Road as now opened and traveled and

Barnesville and Hillsboro Road as it is now opened and traveled and

40 FT wide
Page 109 Vol 4

40 FT wide
Vol 4 Page 103

Carl R. No width given See page 100 Vol 3

Line between
Madison and Macoupin Counties

Line between
Madison and Macoupin Counties

TOWNSHIP 5 NORTH, RANGE 6 WEST.



S. 113

6

5

4

3

1

7

8

9

10

11

12

18

17

16

15

14

13

19

20

21

22

23

24

30

29

28

27

26

25

31

32

33

34

35

36

Road as surveyed by D.A.
S. 69° E. 32.75'
1066.23.00
For original location See page 5 Vol. 2

For old location See page 224 Vol. 2
Road as surveyed by D.A. Stauchling April 1862

Road 46 Ft wide See Page 30 Vol. 4

66 Ft wide See Vol. 3 Page 26
12 5 5

GREEN CASTLE

ALHAMBRA

Road to County line north of Green
See page 39 Vol. 3

45 Ft wide For location See page 8 Vol. 4

45 Ft wide For location See page 8 Vol. 4

45 Ft wide For location See page 8 Vol. 4

Road 40 Ft wide See Page 118 Vol. 3

Road 40 Ft wide See Page 118 Vol. 3

Road 40 Ft wide See Page 118 Vol. 3

40 Ft wide See Page 118 Vol. 3

Road 40 Ft wide See Page 118 Vol. 3

Road 40 Ft wide See Page 118 Vol. 3

Road 40 Ft wide See Page 118 Vol. 3

40 Ft wide See Page 118 Vol. 3

Road 40 Ft wide See Page 118 Vol. 3

Road 40 Ft wide See Page 118 Vol. 3

Road 40 Ft wide See Page 118 Vol. 3

Road 40 Ft wide See Page 118 Vol. 3

Road 40 Ft wide See Page 118 Vol. 3

Road 40 Ft wide See Page 118 Vol. 3

40 Ft wide See Page 118 Vol. 3

40 Ft wide See Page 118 Vol. 3

40 Ft wide See Page 118 Vol. 3

TOWNSHIP 4 NORTH, RANGE 6 WEST.



TOWNSHIP 3 NORTH, RANGE 6 WEST.



ST. JACOBS

ST. LOUIS VAN DALIA AND TERRE HAUTE RAIL ROAD

Cartle and Collinsville Road See page 34, Vol. 2
45 ft. wide

Road from Collinsville to Cartle See 1022 Page 4 Road Records
50 ft. wide

Cart Road
no width given

Cart Road 50 ft. wide

Cart Road 50 ft. wide

Road 50 ft. wide

Road 40 ft. wide

Road to High...

Road as located

Road as located

Road as located

Road 50 ft. wide

Road 50 ft. wide

Road to High...

Cherry 50 ft. wide

Road as located

Road as located

Road 50 ft. wide

Road 50 ft. wide

Road to High...

Road as surveyed by D. A. Spaulding

Road as surveyed by D. A. Spaulding

Road as surveyed by D. A. Spaulding

Road 50 ft. wide

Road 50 ft. wide

Road to High...

Road as surveyed by D. A. Spaulding

Road as surveyed by D. A. Spaulding

Road as surveyed by D. A. Spaulding

Road 50 ft. wide

Road 50 ft. wide

Road to High...

Road as surveyed by D. A. Spaulding

Road as surveyed by D. A. Spaulding

Road as surveyed by D. A. Spaulding

Road 50 ft. wide

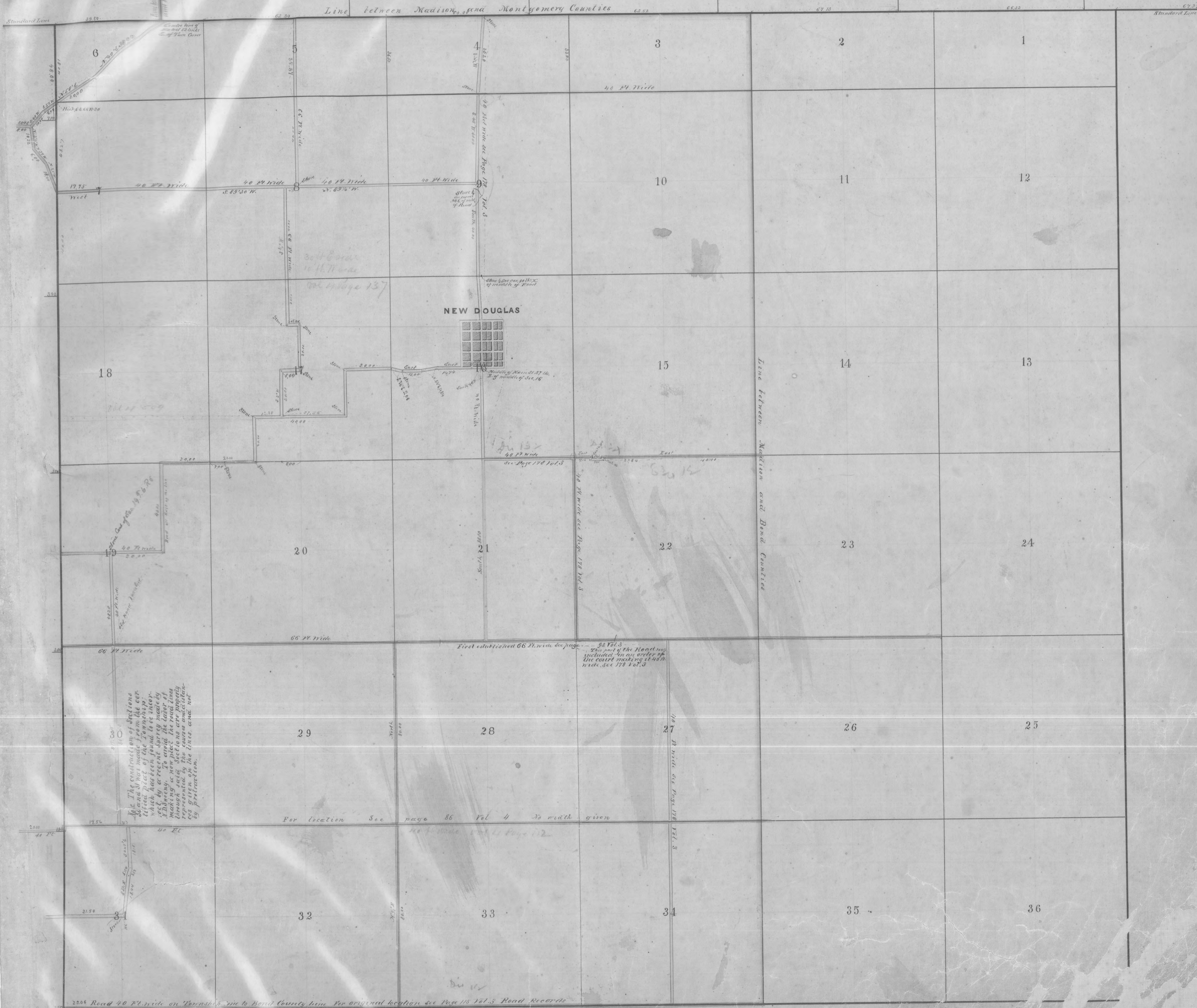
Road 50 ft. wide

Road to High...

TOWNSHIP 6 NORTH, RANGE 5 WEST.

Note: The outlines of *Henry Township* Plat, were copied from the original plat books of the Government survey, which have been found to be erroneous, by a recent survey by N. D. Spencer, recorded in Vol. 3, Pages 23 and 24 of the Clerk's Office County of Madison.

To avoid the labor of making a new map, the lines of the roads in sections 6 and 7 were shortened upon the state to conform with the present plat - but the courses and distances as marked hereon are correct.



TOWNSHIP 5 NORTH. RANGE 5 WEST.

3



TOWNSHIP 4 NORTH, RANGE 5 WEST.



SALINE

HIGHLAND

St. Louis, Vandalia and Terre Haute Rail Road

Road as surveyed by D. A. Spaulding March 1868

Road 50 ft wide See Page 247 Vol. 4

Road to St. Louis Mill 66 R. write see page 114 Vol. 2

Road 40 ft wide see Page 71 Vol. 4

See Page 81 Vol. 4

For old location of line see page 114 Vol. 2

Road from Highland to Pocahontas 66 R. write see page 114 Vol. 2

Proceed see page 87 Vol. 4

Road 60 ft wide see Page 63 Vol. 4

66 R. write see page 114 Vol. 2

See Page 84 Vol. 4

White O. C. N. 25

See Page 84 Vol. 4

See Page 84 Vol. 4

See Page 84 Vol. 4

See Page 84 Vol. 4

See Page 84 Vol. 4

See Page 84 Vol. 4

See Page 84 Vol. 4

See Page 84 Vol. 4

See Page 84 Vol. 4

See Page 84 Vol. 4

See Page 84 Vol. 4

See Page 84 Vol. 4

See Page 84 Vol. 4

See Page 84 Vol. 4

See Page 84 Vol. 4

See Page 84 Vol. 4

See Page 84 Vol. 4

See Page 84 Vol. 4

See Page 84 Vol. 4

See Page 84 Vol. 4

See Page 84 Vol. 4

See Page 84 Vol. 4

See Page 84 Vol. 4

See Page 84 Vol. 4

See Page 84 Vol. 4

See Page 84 Vol. 4

See Page 84 Vol. 4

See Page 84 Vol. 4

See Page 84 Vol. 4

See Page 84 Vol. 4

See Page 84 Vol. 4

See Page 84 Vol. 4

See Page 84 Vol. 4

See Page 84 Vol. 4

See Page 84 Vol. 4

See Page 84 Vol. 4

See Page 84 Vol. 4

See Page 84 Vol. 4

See Page 84 Vol. 4

See Page 84 Vol. 4

See Page 84 Vol. 4

See Page 84 Vol. 4

See Page 84 Vol. 4

See Page 84 Vol. 4

See Page 84 Vol. 4

See Page 84 Vol. 4

See Page 84 Vol. 4

See Page 84 Vol. 4

See Page 84 Vol. 4

See Page 84 Vol. 4

See Page 84 Vol. 4

See Page 84 Vol. 4

See Page 84 Vol. 4

See Page 84 Vol. 4

See Page 84 Vol. 4

See Page 84 Vol. 4

See Page 84 Vol. 4

See Page 84 Vol. 4

See Page 84 Vol. 4

See Page 84 Vol. 4

See Page 84 Vol. 4

See Page 84 Vol. 4

See Page 84 Vol. 4

See Page 84 Vol. 4

See Page 84 Vol. 4

See Page 84 Vol. 4

See Page 84 Vol. 4

See Page 84 Vol. 4

See Page 84 Vol. 4

See Page 84 Vol. 4

See Page 84 Vol. 4

See Page 84 Vol. 4

See Page 84 Vol. 4

See Page 84 Vol. 4

See Page 84 Vol. 4

See Page 84 Vol. 4

See Page 84 Vol. 4

See Page 84 Vol. 4

See Page 84 Vol. 4

See Page 84 Vol. 4

See Page 84 Vol. 4

See Page 84 Vol. 4

See Page 84 Vol. 4

See Page 84 Vol. 4

See Page 84 Vol. 4

See Page 84 Vol. 4

See Page 84 Vol. 4

See Page 84 Vol. 4

See Page 84 Vol. 4

See Page 84 Vol. 4

See Page 84 Vol. 4

See Page 84 Vol. 4

See Page 84 Vol. 4

See Page 84 Vol. 4

See Page 84 Vol. 4

See Page 84 Vol. 4

See Page 84 Vol. 4

See Page 84 Vol. 4

See Page 84 Vol. 4

See Page 84 Vol. 4

TOWNSHIP 3 NORTH, RANGE 5 WEST.

See also in this book pages 325
From Laws of 18... Vol. 2 p. 325

SW CO. BOND CO.

N.W. CORNER CLINTON CO.



N.E. CORNER OF CLAIR CO. NORTH WEST CORNER OF CLINTON COUNTY

Line between Madison and Clinton